

**Memorandum of Understanding**

**Between the**

**Dedham School Committee**

**And the**

**Dedham Parks and Recreation Commission**

The parties to this Memorandum of Understanding, the Dedham School Committee (hereinafter referred to as "the Schools ") and the Dedham Parks and Recreation Commission (hereinafter referred to as "the Commission") have hereby agreed to the following terms and provisions as they pertain to the care of the school property; otherwise known as the "school fields".

**Properties:**

Pool Field

Loewen Field

ECEC / Capen

Mt. Vernon Street tennis Courts

Avery Practice Field\*

Riverdale

Oakdale

Greenlodge

\* The Avery Practice Field has a current maintenance contract.

Boundaries: See attached.

This memorandum will define and put in place what each party is responsible for:

**The Commission will:**

1. Mow fields within the boundaries set in said properties every 6 weeks or as needed.
2. Permit the above fields.
3. Groom all baseball infields at least once a year in said properties.
4. Empty trash for all fields with the boundaries of said properties.
5. Line fields within the boundaries of said properties.
6. Seed and fertilize within the boundaries of said properties as the budget allows.
7. Remove leaves during the fall

**The Schools will:**

1. Empty trash on playgrounds for said properties during the September – June school year.
2. Oversee the needs of playgrounds on said properties during the September – June school year.
3. Fix and maintain all fencing including back stops for said properties
4. Police said properties during hours of operation

The parties agree to reexamine this Memorandum regularly from the date of its execution to determine if any adjustments are needed.

The Parks and Recreation Director shall work with the Facilities Director and the Assistant Superintendent for Business and Finance, to determine the maintenance and care needs for the fields. Such expenses shall be budgeted each year as a Program Cost, an Annual Town Budget cost or the Capital Plan cost depending on the appropriate placement of the item(s). Both the Parks and Recreation Director and Commissioners and the Assistant Superintendent for Business and Finance and School Committee will agree on each item and will jointly support such requests at the appropriate town meetings and hearings.

The future development of the fields for recreational fields will be overseen by a Joint Committee of members from both "the Commission" and "the Schools". The Parks and Recreation Director, and School Administration, shall serve as advisors to this Joint Committee. The purpose of the Joint Committee shall be to provide input and guidance to architects and/or engineers as to the development of the fields.

These are the terms and conditions of this Memorandum of Understanding. If additional language is needed changes are required, the parties to this Memorandum must mutually agree to change this document.

The parties agree to the terms and conditions as they are written.

For the School Committee

*Maryanne Smalmond Briggs*  
*Stephen Bilder*  
*John*  
*Grace White*  
*R. Laprade*  
*John*

Date: 6/6/17

For the Parks and Recreation Commission

*James Miller*  
*David S. ...*  
*Val Ladda*  
*St. Mark*  
*Joe ...*

Date: 5/10/2017



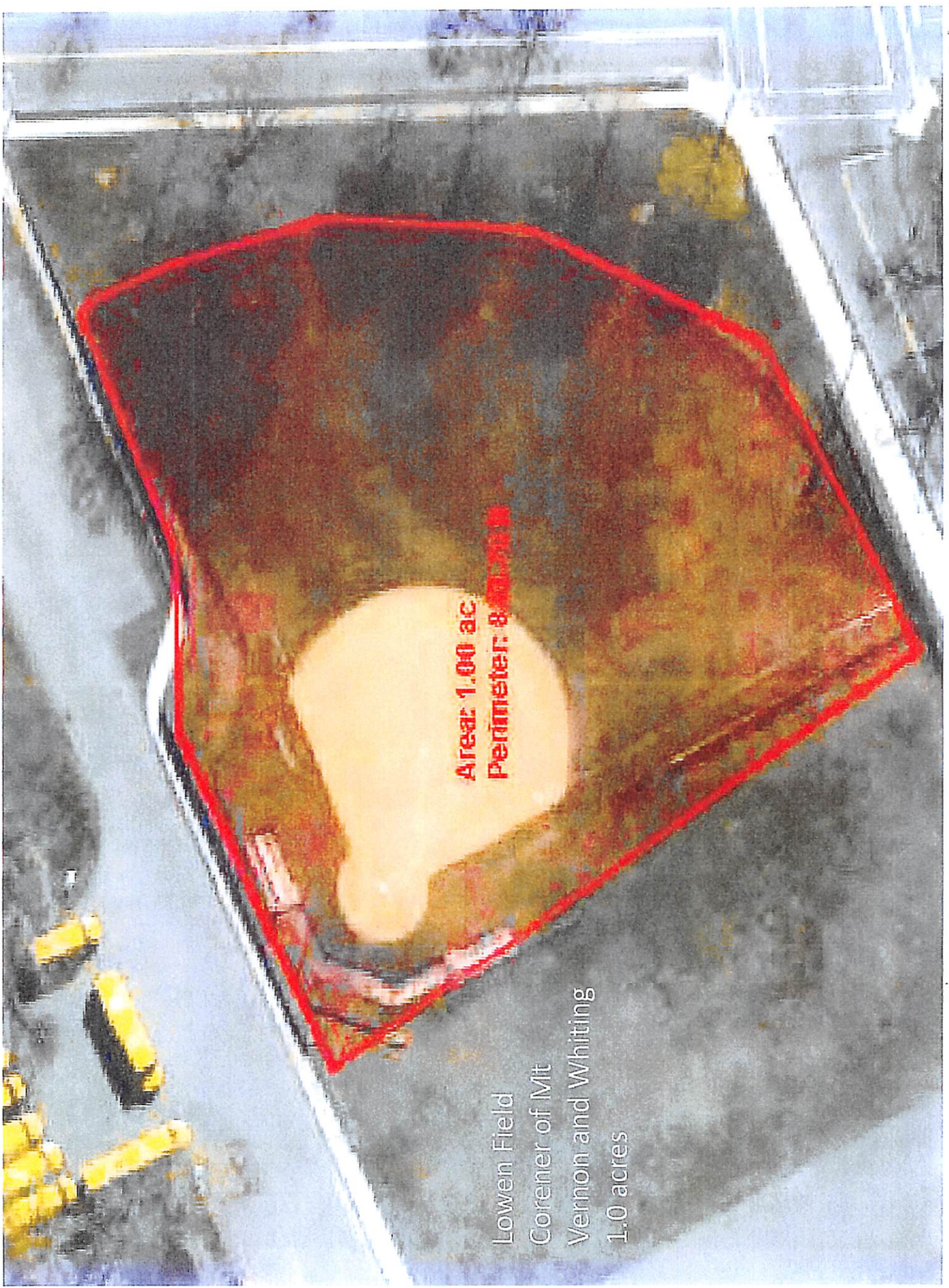
Pool Field  
High Street  
1.2 acres





Area: 1.00 ac  
Perimeter: 800.70 ft

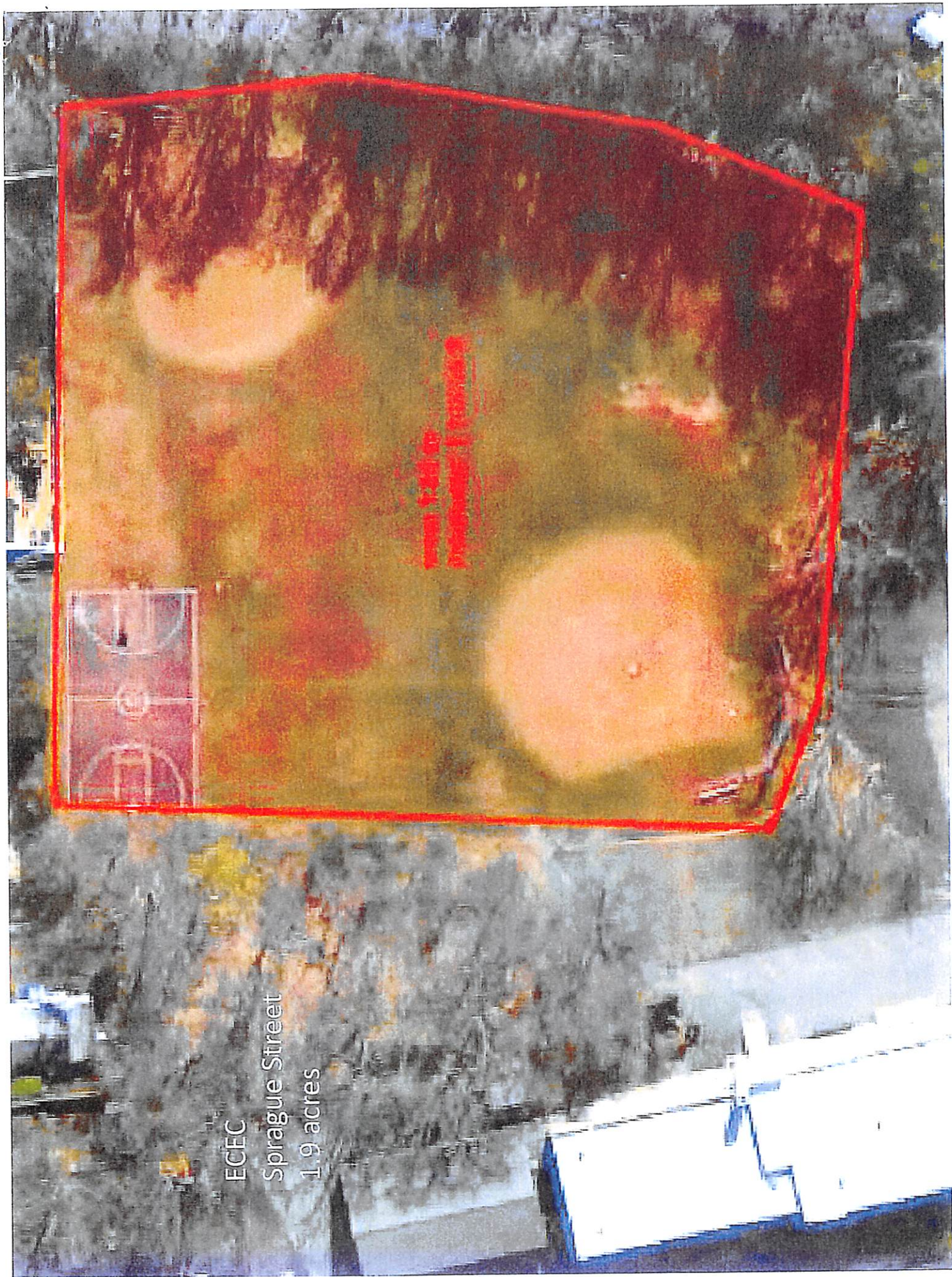
Lowen Field  
Corner of Mt  
Vernon and Whiting  
1.0 acres





ECEC  
Sprague Street  
1.9 acres

1.9 acres  
1.9 acres





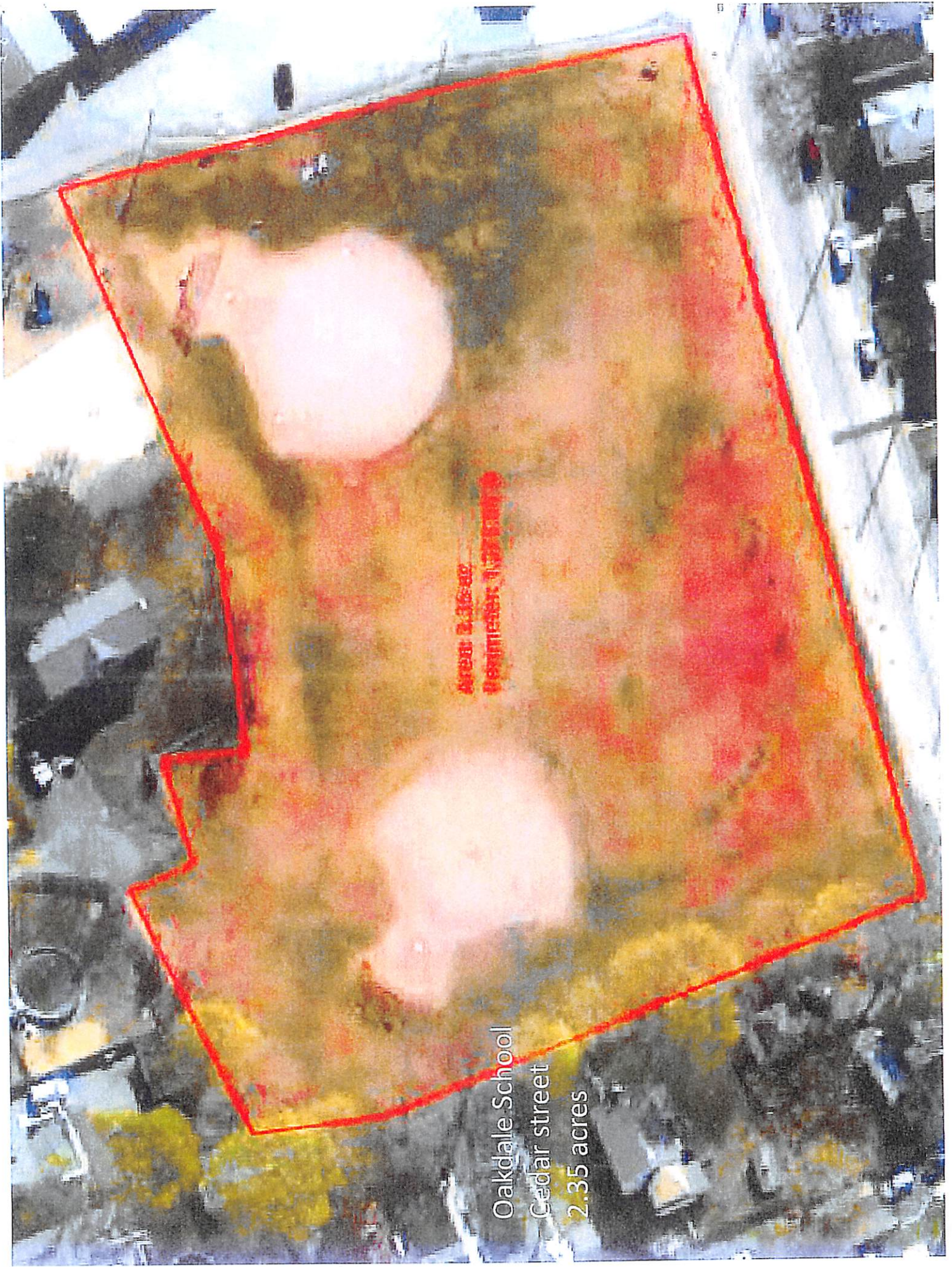
Riverdale School  
Needham Street  
2.8 acres

Approx. 2.8 acres  
Needham Street



Area 2.18 ac  
Perimeter 1.77 miles

Oakdale School  
Cedar street  
2.35 acres





Greenlodge School  
Greenlodge street  
2.0 acres





Avery/Practice field  
High Street  
1.1 acres

